



FOR IMMEDIATE RELEASE

Contact: Kristen Madsen, 707-565-6120

5 November 2019

**New Exhibition Recognizing Emerging Artists in Sonoma County Scheduled:
Workshops, Panels and Discussions Slated**

The Museum of Sonoma County will feature ten Sonoma County artists who have been named as winners of the “Discovered: Emerging Artists in Sonoma County” program for 2019 in its upcoming exhibition. The public opening for the exhibition is scheduled for Friday, November 22, from 5:00 – 7:00 pm. The Discovered program, produced by Creative Sonoma, is funded by grants from Community Foundation Sonoma County and the National Endowment for the Arts. The program, which is produced on a bi-annual basis, offers visibility, credibility and respect to ten of Sonoma County’s less known visual and literary artists.

In addition, a full slate of ancillary activities has been set featuring the Discovered artists on panels, in discussions, and leading art-making sessions for the community. Events include a youth and teen drawing workshop, an artist-led discussion on the ramifications for artists who share political or deeply personal work, and a writing workshop exploring the interconnectivity of poetry and visual art. Details can be found at www.MuseumSC.org/events/.

Discovered artists receive \$2500 stipends for their past work, a professionally produced catalog that features highlights and excerpts of their work, and placement in an exhibition at the Museum of Sonoma County, curated by Museum Executive Director and Curator of Art Jeff Nathanson. “The Museum is honored to partner with Creative Sonoma in presenting the 2019 Discovered exhibition,” said Nathanson. “The overall quality of the submissions was extremely high and this year’s winners represent the very best of emerging artists working in Sonoma County.”

This is the first year that literary artists were invited to participate due to the funding provided by the National Endowment for the Arts. The combination of literary and visual artists invites attendees to explore the divergent expressions and perspectives of two genres in the context of a single show. Visitors to the exhibition will be able to search for the common threads that tie the artists’ works together.

“The Discovered program is a unique opportunity to provide local artists with professional credentials and recognition that can have an impact on their careers moving forward,” said David Rabbitt, Chair of the Board of Supervisors. “This program allows the Sonoma County community to connect with local artists at this critical juncture in their career and imagine what the future holds in store for them.”



Literary arts winners are: Leilani Clark (Santa Rosa), non-fiction; Ernesto Garay (Sebastopol), poetry; Chelsea Rose Kurnick (Windsor), poetry; Joy Lanzendorfer (Petaluma), fiction; and Nicole R. Zimmerman (Penngrove), non-fiction.

Visual arts winners are: Nicole Irene Anderson (Windsor), painting; Annette Goodfriend (Sonoma), sculpture; Ash Hay (Santa Rosa), sculpture; C.K. Itamura (Santa Rosa), interdisciplinary installation; and Nestor Torres Lupercio (Santa Rosa), photography.

Literary jurors were led by New York Times bestselling author Ellen Sussman and included Vicki DeArmon and Elizabeth Stark. Visual jurors were led by Nathanson, and included artists Jessica Martin and Alejandro Salazar.

The Museum of Sonoma County is located at 425 Seventh Street in Santa Rosa and is open Tuesday - Sunday from 11:00 am – 5:00 pm. The show will be open from November 19, 2019 through February 2, 2020. The public opening is scheduled for Friday, November 22nd, from 5:00 to 7:00 pm.

For more information about the exhibition, please contact Katie Azanza at kazanza@museumsc.org. For more information about the “Discovered” program, please contact Kristen.madsen@sonoma-county.org.

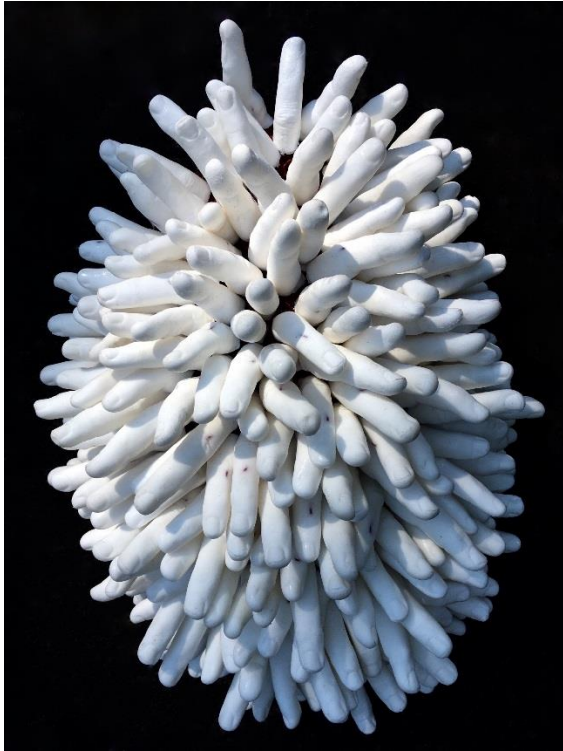
Creative Sonoma, a division of the Sonoma County Economic Development Board is dedicated to supporting and advancing the creative community of Sonoma County.

The Museum of Sonoma County (MSC) engages and inspires our diverse community with art and history exhibitions, collections, and public programs that are inclusive, educational, and relevant.

###

PHOTOS:

Annette Goodfriend
Anemone



Ash Hay
Heavy Heart



Nestor Torres Lupercio
Algún Día 2018 – photograph

